



DANV TOOLS AUSTRALIA

DRILL PIPE, SUBS AND DECKBUSHING



JUNE 16, 2019

DANV TOOLS AUSTRALIA PTY LTD
19b BEALE WAY, ROCKINGHAM, WA, 6168

Contents

DTH DRILL RODS:	2
ROTARY DRILL RODS	6
ROTARY & DTH SUBS	8
ROTARY DECK BUSHINGS	11



DRILL PIPE



DTH DRILL RODS:

Reliable and wear-resistant.

Comprehensive range of threads, all CNC-machined and checked using certified hardened and ground gages.

In-house heat treatment for optimum surface hardness and case depth.

Customizable for steel grade, length, diameter, wall thickness and connection types.



DTH DRILL PIPE SPECIFICATIONS

Diameter (mm)	Diameter (in)	Wall (mm)	Wall (in)	Length (mm)	Length (ft)	Box Thread	Pin Thread	Wrench Flat Width (mm)	Wrench Flat Width (in)	Unit Weight (kg)	Unit Weight (lb)
76	3	4	0.157	1000	3.28	2 3/8" API	2 3/8" API	A/F65	2.5	12	26
76	3	6.3	0.248	1000	3.28	2 3/8" API	2 3/8" API	A/F65	2.5	17	37
76	3	8.8	0.248	1000	3.28	2 3/8" API	2 3/8" API	A/F65	2.5	17	37
76	3	4	0.157	1500	4.92	RD50-6	RD50-6	A/F65	2.5	16	35
76	3	4	0.157	1500	4.92	2 3/8" API	2 3/8" API	A/F65	2.5	16	35
76	3	6.3	0.248	1500	4.92	2 3/8" API	2 3/8" API	A/F65	2.5	23	51
76	3	8.8	0.346	1500	4.92	2 3/8" API	2 3/8" API	A/F65	2.5	24	53
76	3	8.8	0.346	1800	5.91	2 3/8" API	2 3/8" API	A/F65	2.5	28	62
76	3	4	0.157	2000	6.56	2 3/8" API	2 3/8" API	A/F65	2.5	19	42
76	3	6.3	0.248	2000	6.56	2 3/8" API	2 3/8" API	A/F65	2.5	28	62
76	3	8.8	0.346	2000	6.56	2 3/8" API	2 3/8" API	A/F65	2.5	32	71
76	3	8.8	0.346	2000	6.56	2 3/8" API	2 3/8" API	A/F65	2.5	32	71
76	3	4	0.157	3000	9.84	RD50-6	RD50-6	A/F65	2.5	24	53
76	3	6.3	0.248	3000	9.84	RD50-6	RD50-6	A/F65	2.5	39	86
76	3	6.3	0.248	3000	9.84	2 3/8" API	2 3/8" API	A/F65	2.5	39	86
76	3	4	0.157	3000	9.84	2 3/8" API	2 3/8" API	A/F65	2.5	25	55
76	3	4	0.157	3000	9.84	2 3/8" API	2 3/8" API	A/F65	2.5	25	55
76	3	6.3	0.248	3720	12.2	2 3/8" API	2 3/8" API	A/F65	2.5	44	97
76	3	6.3	0.248	4000	13.12	2 3/8" API	2 3/8" API	A/F65	2.5	49	108
76	3	4	0.157	4000	13.12	2 3/8" API	2 3/8" API	A/F65	2.5	31	68
76	3	6.3	0.248	4500	14.76	2 3/8" API	2 3/8" API	A/F65	2.5	52	115
76	3	6.3	0.248	5000	16.4	2 3/8" API	2 3/8" API	A/F65	2.5	61	134
76	3	6.3	0.248	6000	19.69	2 3/8" API	2 3/8" API	A/F65	2.5	72	159

76	3	6.3	0.248	6000	19.69	2 3/8" API	2 3/8" API	A/F65	2.5	70	154
89	3.5	4	0.157	1000	3.28	2 3/8" API	2 3/8" API	A/F65	2.5	13	29
89	3.5	6.3	0.248	1000	3.28	2 3/8" API	2 3/8" API	A/F65	2.5	17	37
89	3.5	6.3	0.248	1000	3.28	2 3/8" IF	2 3/8" IF	A/F65	2.5	17	37
89	3.5	4	0.157	1500	4.92	2 3/8" API	2 3/8" API	A/F65	2.5	18	40
89	3.5	4	0.157	1500	4.92	2 3/8" IF	2 3/8" IF	A/F65	2.5	18	40
89	3.5	6.3	0.248	1500	4.92	2 3/8" API	2 3/8" API	A/F65	2.5	24	53
89	3.5	6.3	0.248	1500	4.92	2 3/8" IF	2 3/8" IF	A/F65	2.5	24	53
89	3.5	6.3	0.248	1700	5.58	2 3/8" API	2 3/8" API	A/F65	2.5	28	62
89	3.5	4	0.157	1800	5.91	2 3/8" API	2 3/8" API	A/F65	2.5	20	44
89	3.5	6.3	0.248	1800	5.91	2 3/8" API	2 3/8" API	A/F65	2.5	29	64
89	3.5	8.8	0.346	1800	5.91	2 3/8" API	2 3/8" API	A/F65	2.5	33	73
89	3.5	8.8	0.346	1950	6.4	2 3/8" API	2 3/8" API	A/F65	2.5	34	75
89	3.5	4	0.157	2000	6.56	2 3/8" API	2 3/8" API	A/F65	2.5	22	49
89	3.5	4	0.157	2000	6.56	2 3/8" IF	2 3/8" IF	A/F65	2.5	22	49
89	3.5	6.3	0.248	2000	6.56	2 3/8" API	2 3/8" API	A/F65	2.5	30	66
89	3.5	6.3	0.248	2000	6.56	2 3/8" IF	2 3/8" IF	A/F65	2.5	30	66
89	3.5	8.8	0.346	2000	6.56	2 3/8" API	2 3/8" API	A/F65	2.5	38	84
89	3.5	6.3	0.248	2100	6.89	2 3/8" API	2 3/8" API	A/F65	2.5	31	68
89	3.5	4	0.157	3000	9.84	2 3/8" API	2 3/8" API	A/F65	2.5	28	62
89	3.5	4	0.157	3000	9.84	2 3/8" IF	2 3/8" IF	A/F65	2.5	28	62
89	3.5	6.3	0.248	3000	9.84	RD70-4	RD70-4	A/F65	2.5	43	95
89	3.5	6.3	0.248	3000	9.84	2 3/8" API	2 3/8" API	A/F65	2.5	43	95
89	3.5	6.3	0.248	3000	9.84	2 3/8" IF	2 3/8" IF	A/F65	2.5	43	95
89	3.5	8.8	0.346	3000	9.84	2 3/8" API	2 3/8" API	A/F65	2.5	52	115
89	3.5	6.3	0.248	3000	9.84	2 3/8" IF	2 3/8" IF	A/F65	2.5	43	95
89	3.5	4	0.157	3000	9.84	2 3/8" API	2 3/8" API	A/F65	2.5	30	66
89	3.5	6.3	0.248	4000	13.12	2 3/8" API	2 3/8" API	A/F65	2.5	56	123
89	3.5	4	0.157	4000	13.12	2 3/8" API	2 3/8" API	A/F65	2.5	39	86
89	3.5	6.3	0.248	4500	14.76	2 3/8" API	2 3/8" API	A/F65	2.5	74	163
89	3.5	4	0.157	4500	14.76	2 3/8" API	2 3/8" API	A/F65	2.5	37	82
89	3.5	6.3	0.248	5000	16.4	2 3/8" API	2 3/8" API	A/F65	2.5	69	152
89	3.5	6.3	0.248	6000	19.69	2 3/8" API	2 3/8" API	A/F65	2.5	81	179
89	3.5	8.8	0.346	6000	19.69	2 3/8" API	2 3/8" API	A/F65	2.5	99	218
102	4.5	8.8	0.346	1000	3.28	2 3/8" IF	2 3/8" IF	A/F75	3	28	61
102	4.5	6.3	0.248	1700	5.58	2 3/8" IF	2 3/8" IF	A/F75	3	36	79
102	4.5	6.3	0.248	3000	9.84	2 7/8" API	2 7/8" API	A/F75	3	55	121
102	4.5	8.8	0.346	3000	9.84	2 3/8" API	2 3/8" API	A/F75	3	94	206

102	4.5	8.8	0.346	3000	9.84	2 3/8" IF	2 3/8" IF	A/F75	3	94	206
102	4.5	6.3	0.248	4000	13.12	2 7/8" API	2 7/8" API	A/F75	3	70	154
102	4.5	6.3	0.248	4000	13.12	3 1/2" API	3 1/2" API	A/F75	3	70	154
102	4.5	6.3	0.248	5000	16.4	3 1/2" API	3 1/2" API	A/F65	3	85	187
102	4.5	6.3	0.248	5000	16.4	2 7/8" API	2 7/8" API	A/F75	3	85	187
102	4.5	6.3	0.248	6000	19.69	2 7/8" API	2 7/8" API	A/F75	3	100	220
102	4.5	6.3	0.248	6000	19.69	3 1/2" API	3 1/2" API	A/F75	3	100	220
102	4.5	6.3	0.248	6000	19.69	2 7/8" IF	2 7/8" IF	A/F75	3	100	220
114	4.5	12.7	0.5	1219	4	3 1/2" API	3 1/2" API	A/F75	3	48	105
114	4.5	12.7	0.5	1219	4	3 1/2" API	3" BECO	A/F75	3	48	105
114	4.5	12.7	0.5	2133	7	3 1/2" API	3 1/2" API	A/F75	3	61	135
114	4.5	17	0.67	6000	19.69	3" BECO	3" BECO	A/F90	3.5	266	585
114	4.5	6.3	0.248	1000	3.28	3 1/2" API	3 1/2" API	A/F95	3.75	26	57
114	4.5	8.8	0.346	1000	3.28	3 1/2" API	3 1/2" API	A/F95	3.75	31	68
114	4.5	6.3	0.248	1500	4.92	2 3/8" IF	2 7/8" IF	A/F95	3.75	35	77
114	4.5	6.3	0.248	1500	4.92	3 1/2" API	3 1/2" API	A/F95	3.75	35	77
114	4.5	8.8	0.346	1500	4.92	3 1/2" API	3 1/2" API	A/F95	3.75	42	93
114	4.5	6.3	0.248	1500	4.92	2 3/8" API	2 3/8" API	A/F95	3.75	35	77
114	4.5	6.3	0.248	2000	6.56	3 1/2" API	3 1/2" API	A/F95	3.75	43	95
114	4.5	6.3	0.248	2000	6.56	3 1/2" IF	3 1/2" IF	A/F95	3.75	43	95
114	4.5	8.8	0.346	2000	6.56	3 1/2" API	3 1/2" API	A/F95	3.75	54	119
114	4.5	6.3	0.248	3000	9.84	3 1/2" API	3 1/2" API	A/F95	3.75	60	132
114	4.5	6.3	0.248	3000	9.84	3 1/2" IF	3 1/2" IF	A/F95	3.75	60	132
114	4.5	8.8	0.346	3000	9.84	3 1/2" API	3 1/2" API	A/F95	3.75	77	170
114	4.5	8.8	0.346	4000	13.12	3 1/2" API	3 1/2" API	A/F95	3.75	100	220
114	4.5	6.3	0.248	4000	13.12	3 1/2" API	3 1/2" API	A/F95	3.75	76	168
114	4.5	6.3	0.248	4500	14.76	3 1/2" API	3 1/2" API	A/F95	3.75	96	211
114	4.5	8.8	0.346	4500	14.76	3 1/2" API	3 1/2" API	A/F95	3.75	111	245
114	4.5	6.3	0.248	5000	16.4	3 1/2" API	3 1/2" API	A/F95	3.75	93	205
114	4.5	6.3	0.248	5000	16.4	3 1/2" IF	3 1/2" IF	A/F95	3.75	94	207
114	4.5	8.8	0.346	5000	16.4	3 1/2" API	3 1/2" API	A/F95	3.75	122	269
114	4.5	6.3	0.248	6000	19.69	3 1/2" API	3 1/2" API	A/F95	3.75	110	243
114	4.5	8.8	0.346	6000	19.69	3 1/2" API	3 1/2" API	A/F95	3.75	136	300
114	4.5	12.7	0.5	6000	19.69	3 1/2" API	3 1/2" API	A/F95	3.75	200	440
114	4.5	8.8	0.346	6000	19.69	2 7/8" API	2 7/8" API	A/F95	3.75	145	320
114	4.5	8.8	0.346	6000	19.69	NC35	NC35	A/F95	3.75	145	320
127	5	8.8	0.346	2000	6.56	3 1/2" API	3 1/2" API	A/F95	3.75	64	141

127	5	6.3	0.248	2000	6.56	3 1/2" API	3 1/2" API	A/F95	3.75	52	115
127	5	6.3	0.248	3000	9.84	3 1/2" API	3 1/2" API	A/F95	3.75	61	134
127	5	8.8	0.346	3000	9.84	3 1/2" API	3 1/2" API	A/F95	3.75	90	198
127	5	6.3	0.248	6000	19.69	3 1/2" API	3 1/2" API	A/F95	3.75	127	280
140	5.5	8.8	0.346	1000	3.28	4 1/2" API	4 1/2" API	A/F120	4.75	45	99
140	5.5	12.7	0.5	1000	3.28	4 1/2" API	4 1/2" API	A/F120	4.75	57	125
140	5.5	8.8	0.346	1500	4.92	4 1/2" API	4 1/2" API	A/F120	4.75	48	106
140	5.5	8.8	0.346	1500	4.92	3 1/2" API	3 1/2" API	A/F120	4.75	48	106
140	5.5	6.3	0.248	1500	4.92	3 1/2" API	3 1/2" API	A/F120	4.75	43	95
140	5.5	8.8	0.346	1524	5	3 1/2" IF	3 1/2" IF	A/F120	4.75	48	106
140	5.5	8.8	0.346	2000	6.56	4 1/2" API	4 1/2" API	A/F120	4.75	76	168
140	5.5	8.8	0.346	2000	6.56	3 1/2" API	3 1/2" API	A/F120	4.75	76	168
140	5.5	12.7	0.5	2000	6.56	4 1/2" API	4 1/2" API	A/F120	4.75	114	250
140	5.5	8.8	0.346	3000	9.84	4 1/2" API	4 1/2" API	A/F120	4.75	104	229
140	5.5	8.8	0.346	3000	9.84	3 1/2" API	3 1/2" API	A/F120	4.75	104	229
140	5.5	8.8	0.346	4000	13.12	3 1/2" API	3 1/2" API	A/F120	4.75	131	289
140	5.5	8.8	0.346	5000	16.4	4 1/2" API	4 1/2" API	A/F120	4.75	160	353
140	5.5	8.8	0.346	6000	19.69	4 1/2" API	4 1/2" API	A/F120	4.75	187	412
140	5.5	8.8	0.346	6000	19.69	3 1/2" API	3 1/2" API	A/F120	4.75	187	412

*Lengths and size adjusted to specified requirements



ROTARY DRILL RODS

Our Drill Pipe is manufactured using the highest quality 4145 HT & Quenched alloy tool joints with options of HT & Quenched alloy or hot-rolled seamless carbon tube.

Mid-Body Tube options include:

4140 Alloy: This alloy tube is applied in hard abrasive formations as a solution to slow the mid-body wear that is common in these types of geological formations. The physical characteristics, yield, tensile and HRC hardness of this alloy tube deliver a more durable, wear-resistant mid-body tube than that of standard, hot-rolled, seamless carbon tube.

ST52: This mid-body tube is typically applied in less abrasive formations. This is a hot-rolled, seamless carbon tube.



ROTARY DRILL PIPE SPECIFICATIONS

Diameter		Wall Thickness		Length		Recommended Thread	Tube Steel Grades
in	mm	in	mm	ft	mm		
5	127	0.5	12.7	25-30	7620-9144	3 1/2" BECO	A106B
5	127	0.75	19.1	25-30	7620-9144	3 1/2" BECO	A106B/4140 HT&Q
5 1/2	140	0.5	12.7	25-30	7620-9144	3 1/2" BECO	A106B
5.5	140	0.75	19.1	25-30	7620-9144	3 1/2" BECO	A106B/4140 HT&Q
6	152	0.75	19.1	25-30	7620-9144	4" BECO	A106B/4140 HT&Q
6.25	159	0.75	19.1	25-30	7620-9144	4" BECO	A106B/4140 HT&Q
6 1/4	159	1	25.4	25-30	7620-9144	4" BECO	A106B/4140 HT&Q
6.5	165	0.75	19.1	25-30	7620-9144	4 1/2" BECO	A106B/4140 HT&Q
6 1/2	165	1	25.4	25-30	7620-9144	4 1/2" BECO	A106B/4140 HT&Q
6.625	168	0.862	21.9	25-30	7620-9144	4 1/2" BECO	A106B/4140 HT&Q
7	178	0.75	19.1	25-40	7620-12192	4 1/2" BECO	A106B/4140 HT&Q
7	178	1	25.4	25-40	7620-12192	5 1/4" BECO	A106B/4140 HT&Q
7 5/8	194	0.75	19.1	25-45	7620-13716	5 1/4" BECO	A106B/4140 HT&Q
7.625	194	1	25.4	25-45	7620-13716	5 1/4" BECO	A106B/4140 HT&Q
8 5/8	219	0.75	19.1	25-45	7620-13716	6" BECO	A106B/4140 HT&Q
8.625	219	0.906	23	25-45	7620-13716	6" BECO	A106B/4140 HT&Q
8 5/8	219	1	25.4	25-45	7620-13716	6" BECO	A106B/4140 HT&Q
9.25	235	1	25.4	25-45	7620-13716	6" BECO	A106B/4140 HT&Q
9 1/4	235	1.250	31.8	25-45	7620-13716	6" BECO	A106B/4140 HT&Q

9.25	235	1.5	38.1	25-45	7620-13716	6" BECO	A106B/4140 HT&Q
10 3/4	273	1	25.4	27.50-45	8382-13716	8" BECO	A106B/4140 HT&Q
10.75	273	1.25	31.8	27.50-45	8382-13716	8" BECO	A106B/4140 HT&Q
10 3/4	273	1.5	38.1	27.50-45	8382-13716	8" BECO	A106B/4140 HT&Q
Additional diameters, wall thicknesses and thread types are available upon request.							



DRILL SUBS



ROTARY & DTH SUBS

Drill String Adaptor Subs are available in a wide range of diameters, lengths, wrenching, and thread size/types.

We understand the need to have a versatile range of configurations to connect your drill rods together. We have a wide range of certified thread gages available to accommodate all your configuration needs.



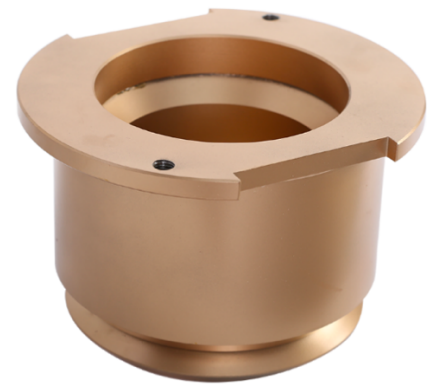
DTH DRILL SUB SPECIFICATIONS

Diameter (mm)	Diameter (in)	Length (mm)	Length (in)s	Box Thread	Pin Thread	Wrench Flat Width (mm)	Wrench Flat Width (in)
76	3	100	3.94	2 3/8" API	2 3/8" API	A/F65	2.5
76	3	130	5.12	2 3/8" API	2 3/8" API	A/F65	2.5
76	3	160	6.3	2 3/8" API	2 3/8" API	A/F65	2.5
76	3	180	7.09	2 3/8" API	2 3/8" API	A/F65	2.5
76	3	200	7.87	2 3/8" API	2 3/8" API	A/F65	2.5
76	3	220	8.66	2 3/8" API	2 3/8" API	A/F65	2.5
76	3	250	9.84	2 3/8" API	2 3/8" API	A/F65	2.5
76	3	260	10.24	2 3/8" API	2 3/8" API	A/F65	2.5
76	3	280	11.02	2 3/8" API	2 3/8" API	A/F65	2.5
76	3	300	11.81	2 3/8" API	2 3/8" API	A/F65	2.5
76	3	320	12.6	2 3/8" API	2 3/8" API	A/F65	2.5
76	3	340	13.39	2 3/8" API	2 3/8" API	A/F65	2.5
76	3	360	14.17	2 3/8" API	2 3/8" API	A/F65	2.5
76	3	380	14.96	2 3/8" API	2 3/8" API	A/F65	2.5
76	3	400	15.75	2 3/8" API	2 3/8" API	A/F65	2.5
76	3	420	16.54	2 3/8" API	2 3/8" API	A/F65	2.5
76	3	440	17.32	2 3/8" API	2 3/8" API	A/F65	2.5
76	3	460	18.11	2 3/8" API	2 3/8" API	A/F65	2.5
76	3	500	19.68	2 3/8" API	2 3/8" API	A/F65	2.5
76	3	520	20.47	2 3/8" API	2 3/8" API	A/F65	2.5
76	3	540	21.26	2 3/8" API	2 3/8" API	A/F65	2.5
89	3.5	100	3.94	2 3/8" API	2 3/8" API	A/F65	2.5
89	3.5	130	5.12	2 3/8" API	2 3/8" API	A/F65	2.5
89	3.5	170	6.69	2 3/8" IF	2 3/8" IF	A/F65	2.5
89	3.5	200	7.87	2 3/8" API	2 3/8" API	A/F65	2.5
89	3.5	220	8.66	2 3/8" IF	2 3/8" IF	A/F65	2.5
89	3.5	250	9.84	2 3/8" API	2 3/8" API	A/F65	2.5
89	3.5	270	10.63	2 3/8" IF	2 3/8" IF	A/F65	2.5

89	3.5	300	11.81	2 3/8" API	2 3/8" API	A/F65	2.5
89	3.5	320	12.6	2 3/8" API	2 3/8" API	A/F65	2.5
89	3.5	350	13.78	2 3/8" API	2 3/8" API	A/F65	2.5
89	3.5	380	14.96	2 3/8" API	2 3/8" API	A/F65	2.5
89	3.5	400	15.75	2 3/8" API	2 3/8" API	A/F65	2.5
89	3.5	430	16.93	2 3/8" API	2 3/8" API	A/F65	2.5
89	3.5	450	17.72	2 3/8" IF	2 3/8" IF	A/F65	2.5
89	3.5	480	18.9	2 3/8" API	2 3/8" API	A/F65	2.5
89	3.5	500	19.68	2 3/8" IF	2 3/8" IF	A/F65	2.5
89	3.5	530	20.87	2 3/8" API	2 3/8" API	A/F65	2.5
89	3.5	550	21.65	2 3/8" API	2 3/8" API	A/F65	2.5
89	3.5	580	22.83	2 3/8" API	2 3/8" API	A/F65	2.5
89	3.5	600	23.62	2 3/8" IF	2 3/8" IF	A/F65	2.5
89	3.5	650	25.59	2 3/8" API	2 3/8" API	A/F65	2.5
89	3.5	680	26.77	2 3/8" IF	2 3/8" IF	A/F65	2.5
89	3.5	700	27.56	2 3/8" API	2 3/8" API	A/F65	2.5
89	3.5	730	28.74	2 3/8" IF	2 3/8" IF	A/F65	2.5
89	3.5	750	29.53	2 3/8" API	2 3/8" API	A/F65	2.5
89	3.5	780	30.71	2 3/8" API	2 3/8" API	A/F65	2.5
89	3.5	810	31.89	2 3/8" API	2 3/8" API	A/F65	2.5
89	3.5	830	32.68	2 3/8" API	2 3/8" API	A/F65	2.5
89	3.5	860	33.86	2 3/8" API	2 3/8" API	A/F65	2.5
89	3.5	880	34.65	2 3/8" API	2 3/8" API	A/F65	2.5
89	3.5	910	35.83	2 3/8" API	2 3/8" API	A/F65	2.5
89	3.5	930	36.61	2 3/8" API	2 3/8" API	A/F65	2.5
102	4	120	4.72	2 3/8" IF	2 3/8" IF	A/F75	3
102	4	140	5.51	2 3/8" IF	2 3/8" IF	A/F75	3
102	4	180	7.09	2 7/8" API	2 7/8" API	A/F75	3
102	4	210	8.27	2 3/8" API	2 3/8" API	A/F75	3
102	4	300	11.81	2 3/8" IF	2 3/8" IF	A/F75	3
102	4	360	14.17	2 7/8" API	2 7/8" API	A/F75	3
102	4	410	16.14	3 1/2" API	3 1/2" API	A/F75	3
102	4	480	18.9	3 1/2" API	3 1/2" API	A/F65	3
102	4	520	20.47	2 7/8" API	2 7/8" API	A/F75	3
102	4	600	23.62	2 7/8" API	2 7/8" API	A/F75	3
102	4	660	25.98	3 1/2" API	3 1/2" API	A/F75	3
102	4	700	27.56	2 7/8" IF	2 7/8" IF	A/F75	3
114	4.5	120	4.72	3 1/2" API	3 1/2" API	A/F75	3
114	4.5	140	5.51	3 1/2" API	3" BECO	A/F75	3
114	4.5	180	7.09	3 1/2" API	3 1/2" API	A/F75	3
114	4.5	210	8.27	3" BECO	3" BECO	A/F90	3.5
114	4.5	300	11.81	3 1/2" API	3 1/2" API	A/F95	3.75
114	4.5	360	14.17	3 1/2" API	3 1/2" API	A/F95	3.75

114	4.5	410	16.14	2 3/8" IF	2 7/8" IF	A/F95	3.75
114	4.5	480	18.9	3 1/2" API	3 1/2" API	A/F95	3.75
114	4.5	520	20.47	3 1/2" API	3 1/2" API	A/F95	3.75
114	4.5	600	23.62	2 3/8" API	2 3/8" API	A/F95	3.75
114	4.5	660	25.98	3 1/2" API	3 1/2" API	A/F95	3.75
114	4.5	700	27.56	3 1/2" IF	3 1/2" IF	A/F95	3.75
114	4.5	740	29.13	3 1/2" API	3 1/2" API	A/F95	3.75
114	4.5	790	31.1	3 1/2" API	3 1/2" API	A/F95	3.75
114	4.5	820	32.38	3 1/2" IF	3 1/2" IF	A/F95	3.75
114	4.5	850	33.46	3 1/2" API	3 1/2" API	A/F95	3.75
114	4.5	880	34.65	3 1/2" API	3 1/2" API	A/F95	3.75
114	4.5	910	35.83	3 1/2" IF	3 1/2" IF	A/F95	3.75
114	4.5	940	37.01	2 7/8" API	2 7/8" API	A/F95	3.75
114	4.5	970	38.19	NC35	NC35	A/F95	3.75
127	5	300	11,81	3 1/2" API	3 1/2" API	A/F95	3.75
127	5	360	14,17	3 1/2" API	3 1/2" API	A/F95	3.75
127	5	410	16.14	3 1/2" API	3 1/2" API	A/F95	3.75
127	5	480	18.9	3 1/2" API	3 1/2" API	A/F95	3.75
127	5	520	20.47	3 1/2" API	3 1/2" API	A/F95	3.75
127	5	600	23.62	3 1/2" API	3 1/2" API	A/F95	4.75
127	5	700	27.56	3 1/2" API	3 1/2" API	A/F95	5.75
127	5	820	32.28	3 1/2" API	3 1/2" API	A/F95	6.75
127	5	910	35.83	3 1/2" API	3 1/2" API	A/F95	7.75
140	5.5	300	11.81	4 1/2" API	4 1/2" API	A/F120	4.75
140	5.5	360	14.17	4 1/2" API	4 1/2" API	A/F120	4.75
140	5.5	410	16.14	4 1/2" API	4 1/2" API	A/F120	4.75
140	5.5	460	18.11	3 1/2" API	3 1/2" API	A/F120	4.75
140	5.5	520	20.47	3 1/2" API	3 1/2" API	A/F120	4.75
140	5.5	600	23.62	3 1/2" IF	3 1/2" IF	A/F120	4.75
140	5.5	700	27.56	4 1/2" API	4 1/2" API	A/F120	4.75
140	5.5	730	28.74	3 1/2" API	3 1/2" API	A/F120	4.75
140	5.5	750	29.53	4 1/2" API	4 1/2" API	A/F120	4.75
140	5.5	780	30.71	4 1/2" API	4 1/2" API	A/F120	4.75
140	5.5	820	32.28	3 1/2" API	3 1/2" API	A/F120	4.75
140	5.5	850	33.46	3 1/2" API	3 1/2" API	A/F120	4.75
140	5.5	870	34.25	4 1/2" API	4 1/2" API	A/F120	4.75
140	5.5	900	35.43	4 1/2" API	4 1/2" API	A/F120	4.75
140	5.5	920	36.22	3 1/2" API	3 1/2" API	A/F120	4.75

DECK BUSHING



ROTARY DECK BUSHINGS

A rotating bushing assembly that has 3 bearing races that allow for the inner sleeve to rotate within the outer body. We use 4140 HT & Quenched alloy raw material in the manufacturing of our rotary deck bushing, which provides high performance combined with longer useful service. This type of deck bushing is used primarily in rotary applications where the rotation speed is considerably higher than that of a DTH application.



DTH DECK BUSHING

Drill Pipe Diameter Inches	Drill Pipe Diameter MM	Outside Diameter Inches	Outside Diameter MM	Flange Diameter Inches/ Type	Flange Diameter MM/ Type	Special Options	Unit Weight LBS	Unit Weight KG
6.5	165	11.25	286	12" w/ 1 x Slot	304 mm w/1 x Slot	On Request	TBA	TBA
7	178	11.25	286	12" w/ 1 x Slot	305 mm w/1 x Slot	On Request	TBA	TBA
7.625	194	11.25	286	12" w/ 1 x Slot	305 mm w/1 x Slot	On Request	TBA	TBA
8.625	219	11.25	286	12" w/ 1 x Slot	305 mm w/1 x Slot	On Request	TBA	TBA
9.25	235	11.25	286	12" w/ 1 x Slot	306 mm w/1 x Slot	On Request	TBA	TBA
Additional types are available upon request.								